



CITTA' DI MOLFETTA

SETTORE TERRITORIO

PIANO PARTICOLAREGGIATO COMPARTO "B.2.1."

Tavola Tipi Edilizi - U.M.I. "C" Tabella Edilizia Privata

4.03

Progetto: ing. Rocco ALTOMARE

Coprogettisti (esterni) arch. Rosalba CASTELLANO
ing. Gaetano DI MOLA
arch. Fabrizio GIGOTTI

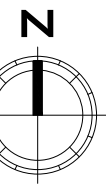
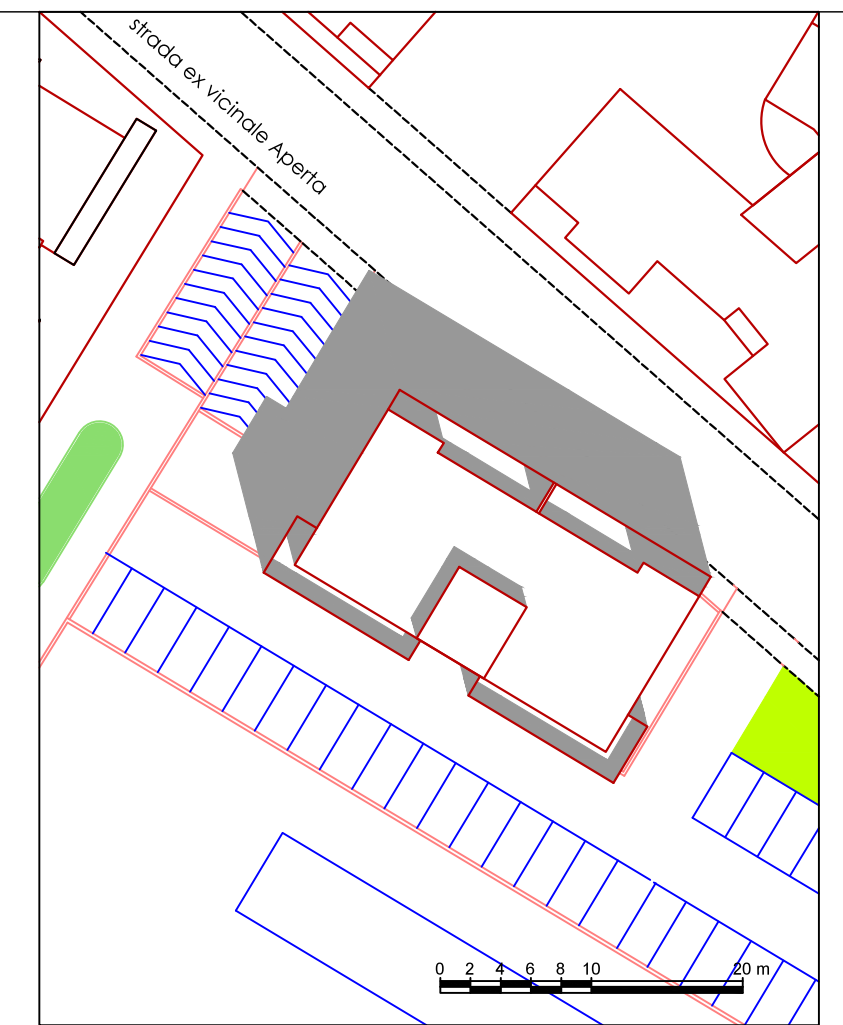
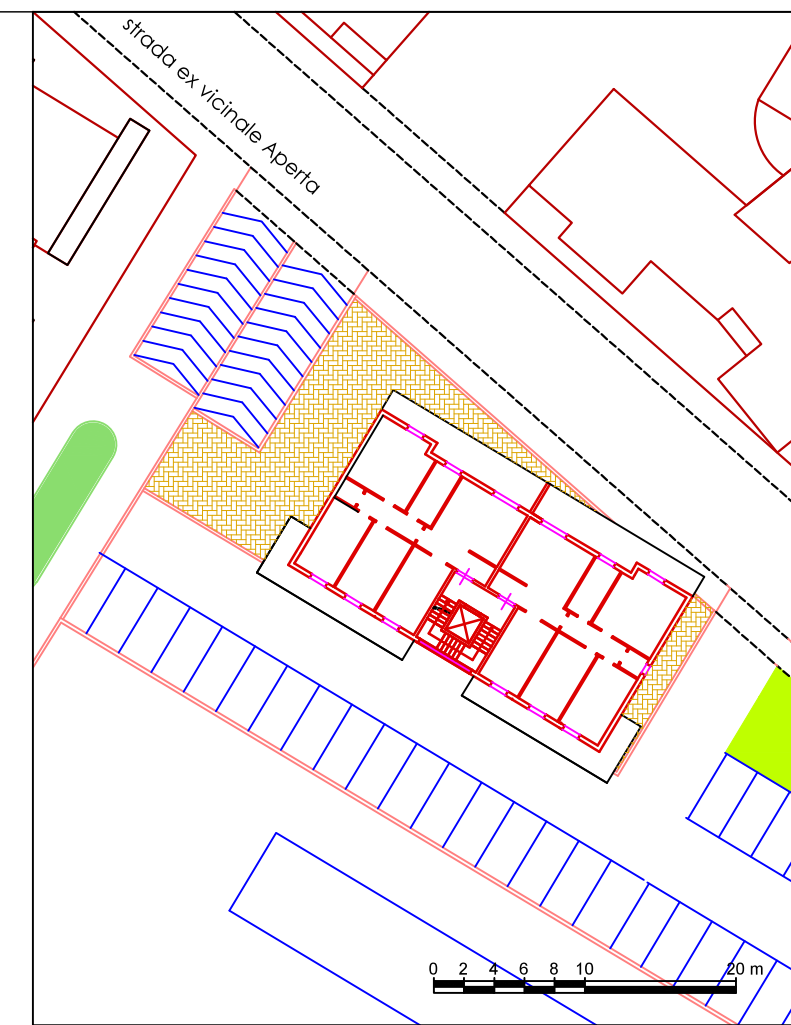
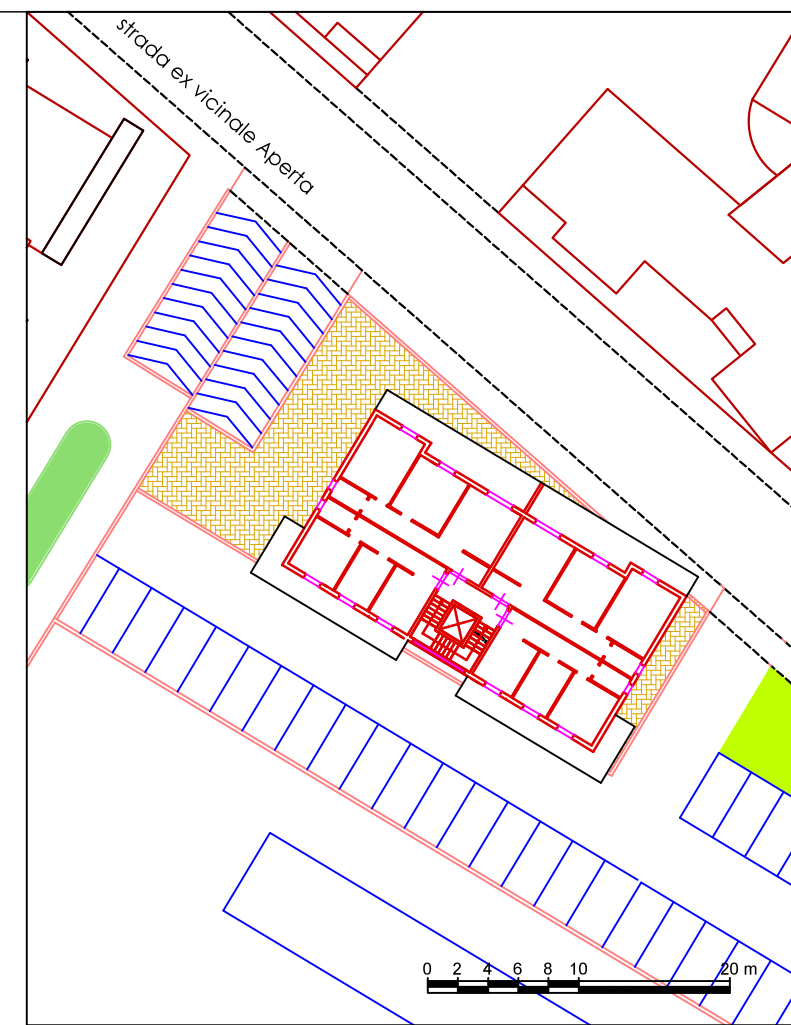
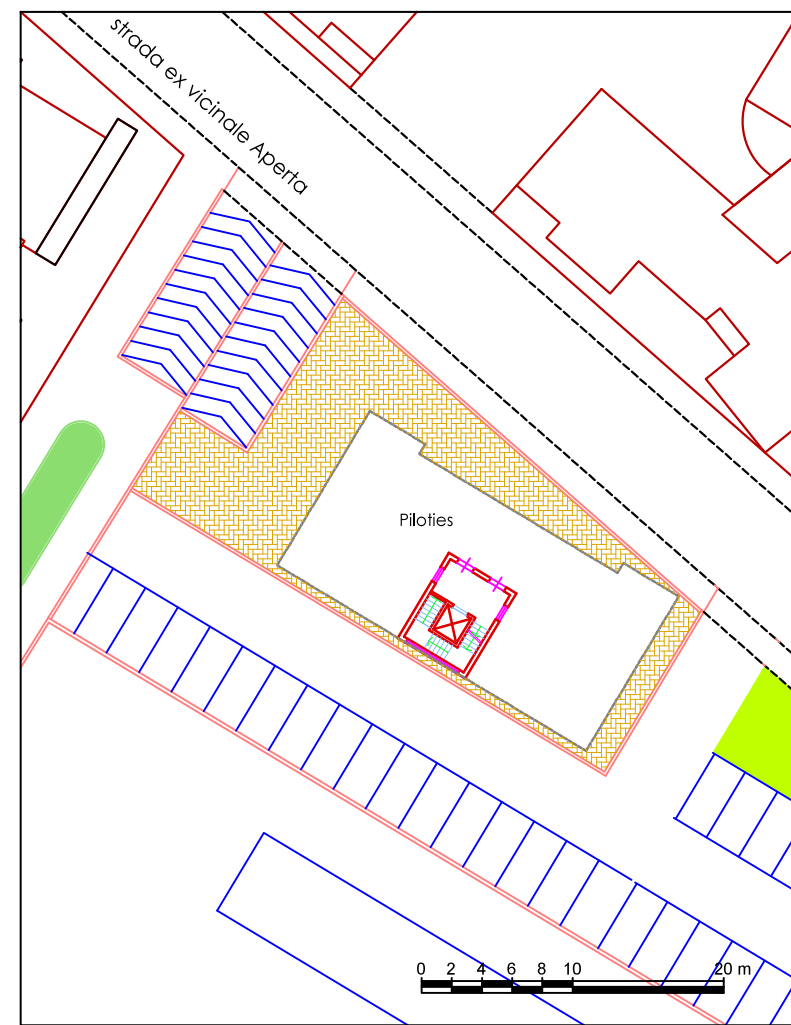
Responsabile Unico Procedimento: ing. Rocco ALTOMARE



Dirigente Settore Territorio
ing. Rocco ALTOMARE

Sindaco
avv. Antonio AZZOLLINI

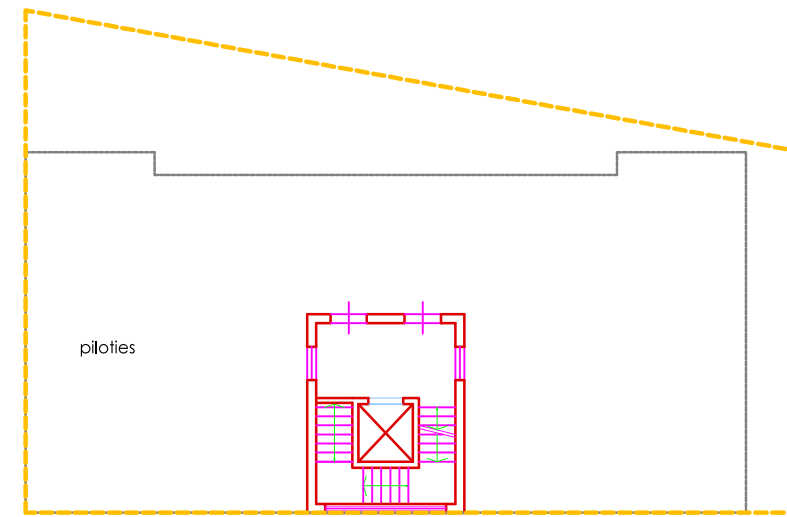
Aprile 2010



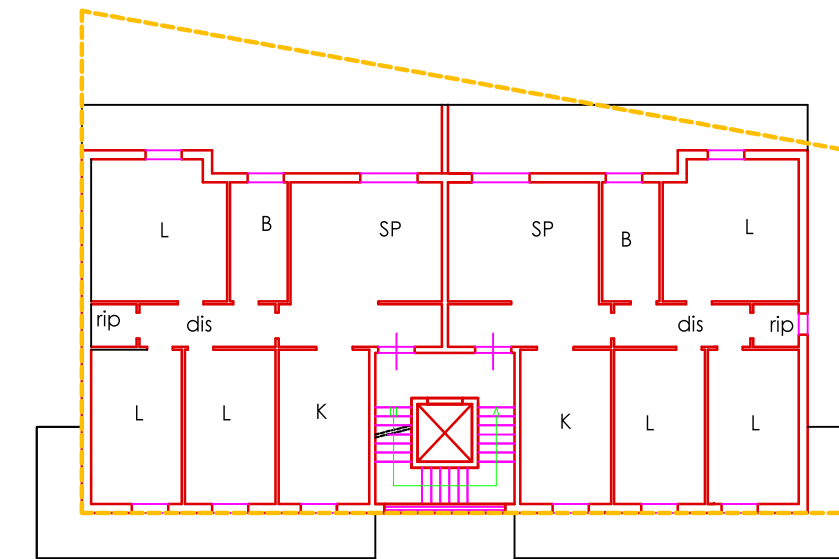
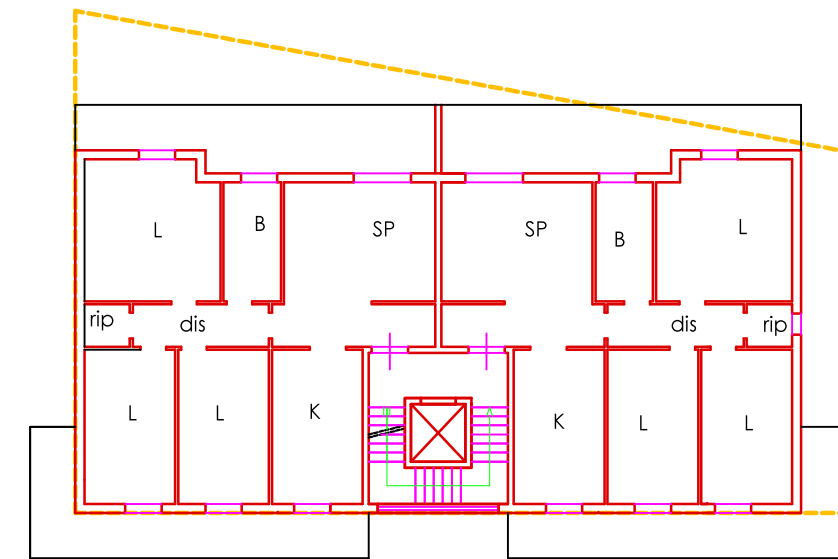
PIANTA PIANO TIPO

Tipologia C

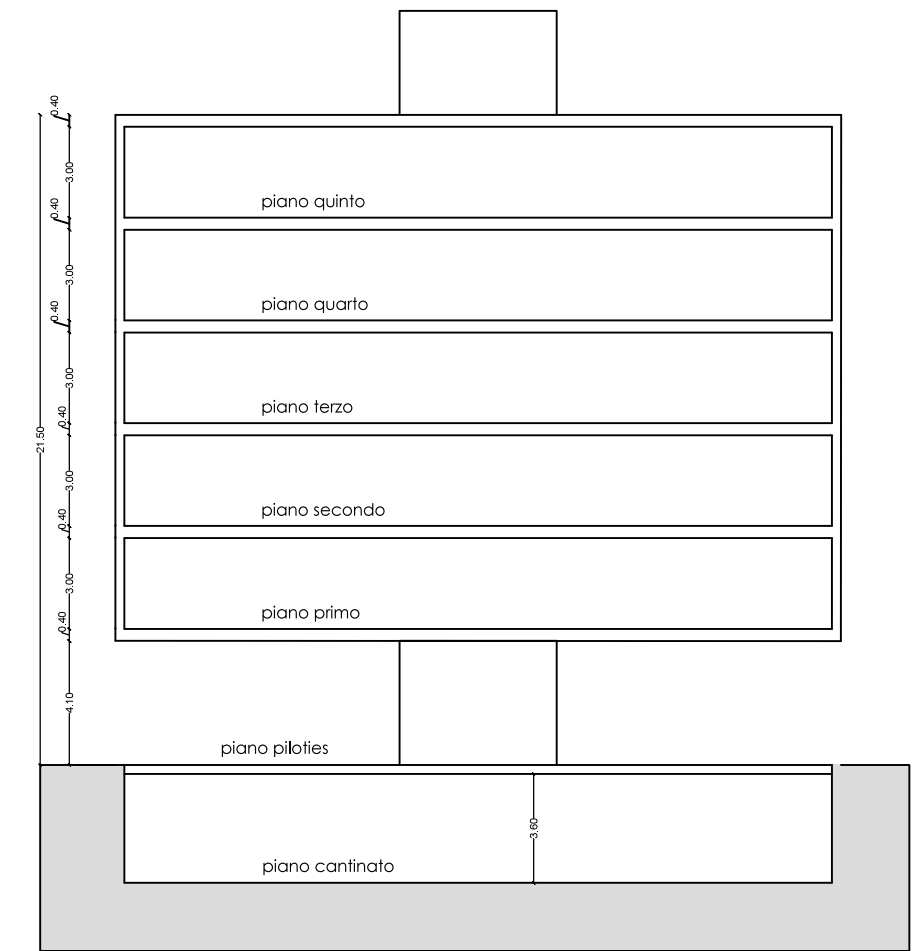
PIANTA PIANO TERRA



PIANTA PIANO PRIMO



Superficie massimo intervento



0 1 2 3 4 5 m